

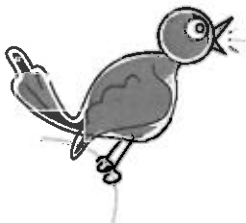
CINNAMON LAKE THYMES

MAY 2012

If April showers bring May flowers, what do May flowers bring? You may remember this riddle from your youth. The answer I always heard was Pilgrims. But, like most questions, there are always other answers. Some would say pollen. Some would say joy to a shut-in. There are always other answers. They can all be correct. Even the tough questions have several answers. We can't always pick the easiest or quickest answer. Sometimes we need to think it through, ask questions, do some research and find the best answer.

The best answer can be right for a particular place or time. It may need reviewed at another time to determine if it is still the best answer. That does not make the original answer wrong. It was the best answer at that time. There are an abundance of factors effecting decisions: technology, short term and long term costs and weather just to name a few. Safety is another consideration. Do I put a one hundred watt bulb in my outdoor lamp post or will a fifty watt do? I want to light up my drive area at night. I do not want to light up my neighbors kitchen all night.

If you have a problem, do your research. Ask for some advice and come to the best answer. It will be worth the effort.



- Pete Plank- CLA Board President

From our Financial Fiduciary

We all should be pleased with the relatively stable financial position of the Association over the past few years. The Association has had a positive cash flow at the end of each year, our budget through March 2012 has a positive variance, the reserve fund is approaching \$70,000 and our road renewal fund currently has a \$36,000 balance. Many of your fellow members declined the July credit for their road assessment and some members made additional voluntary contributions. Road improvements are our number one priority and hopefully we will have the funds to do significant improvements.

We continue to control costs using budgetary constraints. The budget must be approved by the CLA Board on a monthly basis. We are always looking at ways to reduce or control costs. We are currently looking at additional opportunities.

Financial reports are always available in the office and at the CLA Board meetings. If anyone has specific questions, I will be more than willing to discuss them with you.

I wish everyone a fun filled and peaceful summer. Please plan on attending the community annual meeting in June as it may be very interesting.

Carl Habel

Office Hours:

M, T, TH: 8-5pm W: 8-12pm

Fridays: 8-4:30

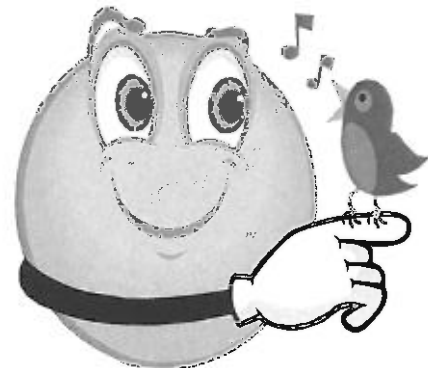
Saturday dates are on the TV channel or call the office.

Phone: 419-945-2521

Fax: 419-945-2182

Security: 419-945-2382

Website: www.cinnamon-lake.com



GREETINGS FROM YOUR FACILITY ENGINEER...

The winter went fast and was not much to speak of despite the predictions. We still used about the same amount of grit and salt on the roads because, although there was not a lot of snow, there was ice. I'm just glad to see the nice weather return.

First up, everyone is asking about the ROADS. We are in contact with the contractors to finish last year's work and to start grinding more areas and to finish them before summer is too far gone. We plan to start working in May, provided the weather cooperates.

WARNING! A speed hump will be put into use at the front guard house exit gate. The gate has become too costly to repair. The hump is low profile and will be a reminder to slow down.

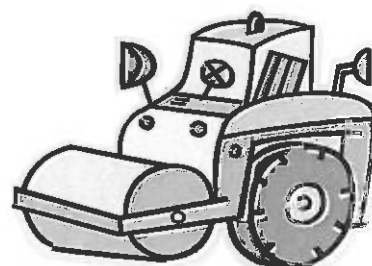
I hope everyone enjoys the new break wall and boardwalk down by the lodge. The sewer plant is currently getting its mandated "face lift". PLEASE do not flush anything that does not belong into the sewer system. We are still having some issues with items clogging and breaking the sewer pumps. All of us that have to climb down into the lift stations thank you for your cooperation. Also, it is VERY costly to repair these pumps. For those of you that walk or ride around the lake and use the rest rooms, please call the office if you notice a problem (water leaking or other issues). This will help us keep costs down on lost water.

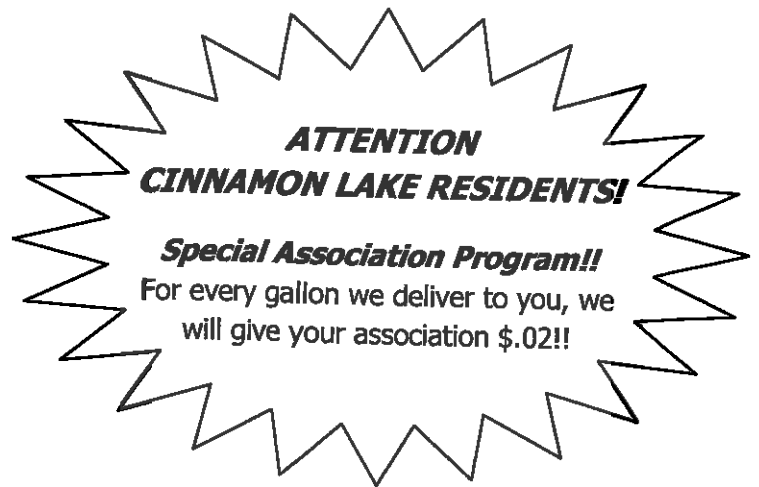
The guard house is working hard on trying to get everyone through the guest lane as fast as possible while keeping track of guests and business personnel. Please be patient with the guard house during high traffic times.

Cinnamon Lake is a great place to live and to work. I hope you will enjoy all that Cinnamon Lake has to offer this summer. Memorial Day is just around the corner, so please thank a veteran for the freedom to live in the greatest country in the world. Have a great summer and God bless everyone!



Thank you,
Your Facility Engineer
Glen Goff





SUNRISE ENERGY OFFERS THE FOLLOWING:

- Free propane tank installation (on credit approved accounts)
- Fixed price program that requires no money down
- Budget program that eliminates high heating bills
- Additional discounts for customer owned tanks
- Keep full program
- Pre-Buy program
- **NO** lock-in fee
- **NO** fuel surcharge fee
- **NO** hazmat fee
- **NO** tank rental fee (provided at least one full tank used per year)

Please contact me anytime to request more information or to check pricing. I look forward to hearing from you!

Jason Kamann
Energy Sales Specialist
jasonkamann@sunriseco-op.com
Cell: 419-706-6338
Office: 1-800-432-4954 Ext. 249

UTILITIES UPDATE

In the last Thymes article I wrote, I reported that the upgrade work at the Wastewater Treatment Plant (WWTP) was just getting under way. The project was advertised and the bids opened in November. The Contract was awarded to The Simonson Construction Company, out of Ashland Ohio, in December 2011.

Since the beginning of the year the Contractor has been ordering the various items of equipment along with pre-casting the various tanks that will be added. A **Ground Breaking** ceremony was held on April 3rd, attended by most of the board members and only two other residents of the community. The Ashland Times Gazette carried a nice article covering the project. We wanted to get as much public exposure about Cinnamon Lake to the Ashland County community. Mid April will see the installation of the first precast unit, and if the weather cooperates, the rest will soon follow. The Contractor anticipates being complete by late summer.

Another point I wanted to clarify is that of the sewer billings. The April billing, as well as all future billings, is now based on each property owner's actual consumption of Rural Lorain County water. The bill is no longer based on your average water usage when Cinnamon Lake was still making water. We obtained the water usage amounts from Rural Lorain and we will continue to do this in the future.

The one and two member households can no longer complain that they are paying the same sewer bill as a household with four, five or more people living there. So please remember, you are now paying a sewer bill based on the **ACTUAL AMOUNT OF WATER THAT YOU USE PER QUARTER**. Your sewer bill will fluctuate, as does your water bill, based on the amount of water that you use per quarter.

If you have questions concerning these issues, or any other item, please attend the Utility Board Meeting held on the 4th Monday of the month. Thanks and I hope you have an enjoyable summer.

Joseph F. Petric, President CL Utility Board



EVERDRY[®]

WATERPROOFING



Ready For The
Next Storm?



Give this ad to the technician and save up to \$300 off



*Free Estimates
Satisfaction Guaranteed
Lifetime Warranty*

Call Today - 800-796-3837

www.basementwaterproofer.com

Comments from the Beautification Committee:

It's that time of the year once again to start making Cinnamon Lake a beautiful place to live. All the construction work is completed and we are ready for a facelift. Thanks to all of you who help with the street sign flower boxes and those on the committee. This really does help our community look great. We realize that watering and weeding the boxes does take time and commitment. We truly appreciate the effort. For those of you willing to plant, water and weed a flower box but find the box too scary to tackle because of the weeds. Call Rachel Habel at 945-2341 and someone from the Beautification Committee will do it for you.

Thanks again for all your help.



REMEMBER: You must maintain your lot(s) throughout the spring and summer. If Cinnamon Lake's maintenance department mows your empty lot, you will be charged the season's mowing charge. If you are mowing your lot, be sure to let the guard house know each time you do so.

All pets must be contained on your property. If they are on any public areas they must be on a leash and in control. Please keep barking to a minimum so that you don't disturb your neighbors.

ATVs and golf carts must be registered at the office. Only licensed drivers are permitted to ride on the roads. All traffic laws must be followed.

Have a wonderful spring & summer!
The Appeals Committee



**Does your
furnace need
repaired or replaced?**

**Call
Shakley Mechanical, Inc.
419-281-6909**

**We'll get you warmed up
in no time at all!**



www.SHAKLEYMECHANICAL.COM

Ohio Lic# 30003

TRAVEL CORNER

I have been in many places, but I've never been in Cahoots. Apparently you can't go alone. You have to be in Cahoots with someone.

I have however, been in Sane. They don't have an airport. You have to be driven there. I have made several trips there thanks to my friends, family and work.

I would like to go to Conclusions, but you have to jump and I'm not too keen on physical activity anymore.

I have also been in Doubt. That is a sad place to go and I try not to visit there too often. But I'd rather stay there than in Sincere. I found no friendly people there.

I've been in Flexible, but only when it was very important to stand firm.

Sometimes I'm in Capable and I go there more often as I'm getting older.

One of my favorite places to be is in Suspense! It really gets the adrenalin flowing and pumps up the old heart! At my age I need all the stimuli I can get!

And sometimes, I think I am in Vincible, but life shows me I am not.



FUN FACTS:

Bats always exit their caves by making a left turn.



The memory span of a goldfish is about three seconds

A group of goats is called a "trip"



On average, sharks kill 10 humans every year. About 100 people die each year when they are stepped on by COWS.



DR. KATHY BRISLEY-SEDON -MAGD

Master of Academy of
General Dentistry
10 West Main Street
Seville, Ohio 4427
330-769-2918



Comprehensive range of services including:
Fillings, Sealants,
Bonding, Crowns,
Root Canals, Bridges,
Dentures, Implants,
and Cosmetic
Treatments

Committed to continued education, Dr. Kathy and her professional staff offer you the latest in dentistry and state of the art technology.

Convenient Location: South of Medina
Next to Seville Library

**SPRING GARAGE SALES
MAY 18TH & 19TH
9-5PM**

**LUNCH AT THE LODGE
HOSTED BY THE FISH & LAKE
COMMITTEE**

**NEW THIS YEAR!!!
CRAFT/VENDOR SHOW AT THE LODGE
BE SURE TO STOP AND SHOP**

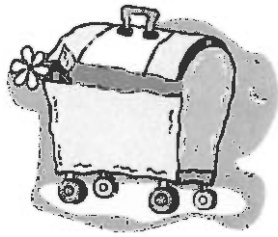
**\$5 REGISTRATION FEE
TO BE PAID BY
MAY 16TH
AT OFFICE**

**REMEMBER TO DROP
OFF BAKERY DONATIONS
AT THE LODGE
10-2PM ON THE
DAY OF THE SALES**



Scrap Metal Day
Monday, May 23rd

**If you have any items that
you would like picked up,
please call the office
to participate**



BAKE SALE

The Fish & Lake
Committee are looking
for baked goods, candies,
desserts, pies, breads, etc.
for the bake sale during
the garage sales.

Please bring your items
to the lodge on the day of
the sale from
10a-2pm



AVON



**Are you looking to buy
or sell Avon products
or interested in
becoming an
Avon Representative?**

**Call Janet Lefever
419-945-2709**



**COMMUNITY CENTER
PAVILION & LODGE
RENTAL**

**LODGE- \$100.00 SECURITY DE-
POSIT
\$100.00 FOR 6 HOURS
\$10.00 EACH ADDITIONAL HOUR**

**PAVILION - \$25.00 FIRST 4 HOURS
\$5.00 EACH ADDITIONAL HOUR**

**COMM. CTR. - \$100.00 SECURITY DEPOSIT
\$15.00/HOUR—MIN. 4 HOURS**

**IF THE PAVILIONS ARE
NOT RENTED, THEY ARE
ON A FIRST COME BASIS**

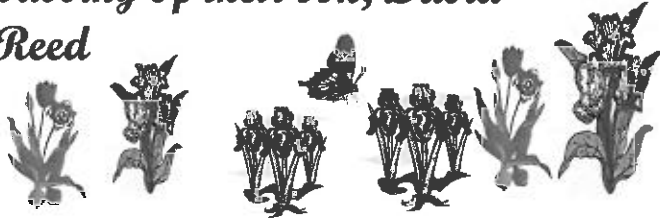


Our Condolences to: 

To Nedra (Tom) Lautzenhiser on the passing of her stepfather, Max Bahr

To Rita (Gerry) Strouse on the passing of her mother, Catherine Funk

To Junior & Marian Reed on the passing of their son, David Reed



**MATTESON
FUNERAL
HOME**



40 CONGRESS STREET,
WEST SALEM, OH 44287
TELEPHONE (419) 853-4000

**PREARRANGEMENTS
CREMATIONS
OUT OF TOWN ARRANGEMENTS
MONUMENTS
PREPAYMENTS
LIFE INSURANCE FOR
FUNERAL PLANNING**

24 HOUR PERSONALIZED SERVICES

**MICHELE L. MATTESON
FUNERAL DIRECTOR**

**SERVING THE COMMUNITY AND
TRI-COUNTY AREA**



**WELCOME TO OUR
NEWEST MEMBERS**



1272 Tupelo— Cathy Jo Mahan

2137 Tarragon— Jamie Homchick

3316 Acuminata -Scott & Rosemary
Levy

4147 Cedar—Rodney & Julie Rogers

4150 Cedar -Dee Anna Kline

4178 Aspen- Karl & Paige Hanf

5102 Sangria—Jonathon Tanner &
Sarah Scobie

5115 Sangria—Richard Ziebro



SUSIE'S HAIR DESIGN

230 COUNTY ROAD 620
ALBION, OHIO

OWNER: SUSIE SPASIC
419-651-6982

**CLOSED SUNDAY & MONDAY
OPEN TUES-SAT 9-7**

Haircuts: \$5.95 Perms \$30.00
Color \$25.00 Hi-lites \$35.00

Full Service Salon for the family !!



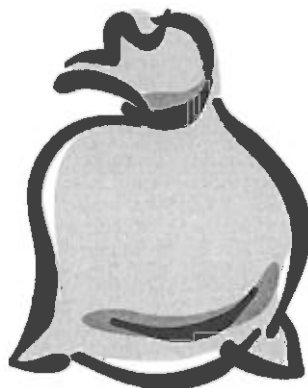
ALUMINUM CAN

RECYCLE BIN

IS STILL AVAILABLE!!

**Please help out the Fish & Lake Committee
by contributing to the bin located by the compactor.**

**PLEASE put your cans in TIED bags
ALUMINUM CANS ONLY!!!**



"Be the change you want to see in the world." - Mahatma Gandhi

The Office would like to acknowledge the generosity of some members in Cinnamon Lake that have donated money to the road renewal fund. These donations were above and beyond the amount of any invoices. **Their kindness has not go unnoticed.**

*"A community is like a ship;
everyone should be prepared to take the helm." - Henrik Ibsen*

Here.....fishy, fishy, fishy. 

Looking around the lake, I see several boats in the water already and many more in yards being cleaned up, soon to be launched. Please remember that all watercraft must have their 2012 stickers on **BEFORE** you put them in the lake. Violators will be fined after one warning, regardless what boating season the first warning was received.

Perhaps when you were getting your mail, you noticed the bulletin informing fishermen to return to the water any perch ten inches or less. If you catch a perch under ten inches and it swallowed the hook and is soon to die from the injury, it is okay to keep it. We are simply trying to increase our perch population by allowing them to spawn a few years before being caught. Female perch are capable to spawn at eight inches. The Fish and Lake Committee, at considerable expense, just stocked 2,800 six to eight inch perch in April.

Before closing, I would like to mention the Fish and Lake Committee is funding improvements in the lodge's kitchen area. The work is being performed by Cinnamon Lake Maintenance Staff. Please thank them for all of their efforts, both for the improved water front area around the lodge and the upgrades to the lodge itself.

With that, I'll close saying "GOOD FISHING AND SAFE BOATING."

NOTE: All fines collected from boating violations **DO NOT** go to the Fish and Lake Committee but instead, go to the Cinnamon Lake Association general fund.

- Russ Maier, Chairperson



2012 POOL SCHEDULE

The schedule for the pool
is as follows:



**THE POOL WILL BE OPEN ON MEMORIAL DAY
WEEKEND FROM 12-8PM (WEATHER PERMITTING)**

It will be closed the following week, but will reopen for the season
on **JUNE 2ND**

The weekly schedule is as follows:

Monday—Thursday 12-7*

Fri- Sun 12 -8*

The cost of a pool pass has changed to the following:

For owners of one lot— \$25.00 (will admit 5 additional people)

For owners of two lots—\$20 (will admit 5 additional people)

For owners of 3 or more lots—\$15 (will admit 5 additional people)

Guest fee is still \$2.00 per guest

Reminder: Free passes from the January incentive
are ready in the office.

Swimming Lessons will have two sessions:

Tues and Thursdays starting June 19th for 4 weeks, (8 lessons) 10:30-12
(Time will depend on class level)

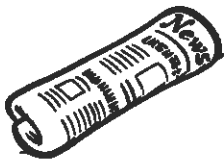
Saturdays, starting July 7th for 8 weeks 10:30-12pm
(Time will depend on class level)

Watch for sign-up notices the beginning of June.
Cost will be \$20 per child for each session

*Schedule is dependant on the number of guards employed. Fewer guards
will require shorter hours.

Instructions for Recycling Bins located at Front Mail House

ACCEPTABLE ITEMS AND HOW TO PREPARE THEM



NEWSPAPERS



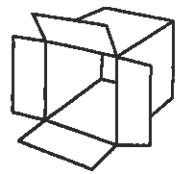
ALUMINUM CANS



STEEL CANS



PLASTICS 1-7



CORRUGATED CARDBOARD



MAGAZINES



BOOKS



MISC. PAPER
JUNK MAIL



GROCERY BAGS



PRINT CARTRIDGES

NEWSPAPER - Put in paper or plastic grocery bags or tie in bundles, ad sticks can stay in newspapers.

MAGAZINES - Put in paper or plastic grocery bags or tie in bundles.

BOOKS - Put in paper or plastic grocery bags or tie in bundles.

MISC. PAPER - Put in paper or plastic grocery bags.

CARDBOARD/BOXBOARD - Flatten & bundle or flatten and put inside other cardboard containers.

ALUMINUM CANS - Rinse out cans & drain, cans may be crushed to save space but not necessary.

STEEL/TIN CANS - Rinse out food cans, Aerosol cans may be included if empty.

PLASTIC CONTAINERS - Plastic containers with a #1 thru #7 code on the bottom are recyclable. Rinse containers & drain, flatten to save space. No need to remove labels, caps, or rings. Do not include motor oil bottles or anti-freeze jugs. Milk bottles, water jugs, detergent bottles, cottage cheese containers, prescription bottles, etc. are all acceptable.

PLASTIC GROCERY BAGS - No garbage or trash bags, no glossy finish bags, flat finish see through type only.

PRINTER CARTRIDGES - Place in original container, if possible & put with other recyclable items.

ASSOCIATION BOARD MEETING MOTIONS

JANUARY 2012

- **Motion 1A** by Dan Sexton, 2nd Kathy Snyder, to approve November minutes. Approved: Unanimous
- **Motion 2A** by Carl Habel, 2nd by Fred Green to approve spending up to \$1000.00 for the installation for the piling for the Lodge gazebo. Approved: Unanimous
- **Motion 3A** by Joe Petric, 2nd Dan Sexton to approve 2012 budget. Approved: Unanimous
- **Motion 4A** by Joe Petric, 2nd Kathy Snyder to allow the member of lots 3050,3178 an extension to pay her property taxes until the end of March to fulfill lot return agreement. Approved: Unanimous
- **Motion 5A** by Carl Habel, 2nd by Joe Petric to accept back lot #2209. Approved: Unanimous
- **Motion 6A** by Joe Petric, 2nd Kathy Snyder to accept lot 3180 back. Approved: Unanimous
- **Motion 7A** by Joe Petric, 2nd by Dan Sexton to accept back lot 1225. Approved: Unanimous
- **Motion 8A** by Carl Habel, 2nd by Fred Green to accept back lot 3005 if the member pays \$350.00 as a settlement amount. Approved: Unanimous
- **Motion 9A** by Carl Habel, 2nd by Joe Petric to approve property insurance renewal. Approved: Unanimous

FEBRUARY 2012

- **Motion 10A** by Joe Petric, 2nd by Fred Green to approve January Minutes. Approved: Unanimous
- **Motion 11A** by Carl Habel, 2nd by Dan Sexton to revise the 2012 budget to reflect the changes to the gas/fuel and culvert repair accounts. Approved: Unanimous
- **Motion 12A** by Joe Petric, 2nd by Carl Habel to accept the updated version of Homeowner/Landlord policy. Approved: Unanimous
- **Motion 13A** by Joe Petric, 2nd Kathy Snyder to accept the updated Foreclosure policy. Approved: Unanimous
- **Motion 14A** by Dan Sexton, 2nd Jim Miller to accept the update Gate Card Deactivation policy. Approved: Unanimous
- **Motion 15A** by Joe Petric, 2nd by Kathy Snyder to accept the updated version of Payment Plan. Approved: Unanimous
- **Motion 16A** by Dan Sexton, 2nd by Carl Habel to discontinue the Contractor registration and fee. Approved: Unanimous

FEBRUARY 2012 CONTINUED

- **Motion 17A** by Carl Habel, 2nd by Dan Sexton to approve contract with Time Warner. Approved: Unanimous
- **Motion 18A** by Carl Habel, 2nd by Fred Green to reactivate a member's gate card that had been deactivated due to misuse. Approved: Unanimous
- **Motion 19A** by Joe Petric, 2nd by Dan Sexton to approve the agreement with Buckeye Engineering for Dam Safety Emergency Plan. Approved: Unanimous
- **Motion 20A** by Dan Sexton, 2nd by Kathy Snyder to approve the renewal of Health Insurance with Anthem. Approved: Unanimous
- **Motion 21A** by Joe Petric, 2nd by Carl Habel to approve the yearly reviews and pay increases for the employees. Approved: Unanimous
- **Motion 22A** by Dan Sexton, 2nd by Carl Habel to send letters to members regarding the choice about the July 2011 assessment. Approved: Unanimous
- **Motion 23A** by Dan Sexton, 2nd by Fred Green to adjourn meeting. Approved: Unanimous

MARCH 2012

- **Motion** by Dan Sexton, 2nd Carl Habel to approve February Minutes. Approved: 4 Yes, 1 abstain—Fred Green
- **Motion 24A** by Carl Habel, 2nd by Dan Sexton to remove the second sentence from motion 19A (Use Reserve Fund if needed) Approved: Unanimous
- **Motion 25A** by Joe Petric, 2nd Dan Sexton to approve the letter regarding the July 2011 Road Assessment. Approved: 4 yes, 1 abstain-Carl Habel
- **Motion 26A** by Joe Petric, 2nd by Fred Green to move into executive session. Approved: Unanimous

ANNUAL MEETING INFORMATION

MAY 4TH—NOTICE OF TRANSFERS

**MAY 10TH—DATE OF RECORD
(MUST BE CURRENT ON ALL BILLS TO BE
ELIGIBLE TO VOTE)**

MAY 14TH—MAILING OF BALLOTS

JUNE 3RD—2:00 PM MEETING AT LODGE



**NOTICE OF ANNUAL MEETING OF THE MEMBERS OF
CINNAMON LAKE ASSOCIATION, INC. and
CINNAMON LAKE UTILITIES ASSOCIATION, INC.**

NOTICE IS HEREBY GIVEN that the Annual Meeting of the members of Cinnamon Lake Association, Inc. (herein called "CLA") and Cinnamon Lake Utilities Association, Inc., (herein called "CLU"), Ohio not for profit corporations, will be held at the **LODGE** in the Cinnamon Lake Subdivision on Sunday, **JUNE 3, 2012, at 2:00 pm** Eastern Daylight Savings time for the purpose of acting on the following:

- A. Election of **TWO (2)** Directors for CLA. The **TWO (2)** candidates who receive the highest number of votes will fill **TWO (2)** vacant seats for **3-year terms**.
- B. Election of **SIX (6)** members for the Nominating/Elections Committee.
- C. Vote **YES** or **NO** to change the cost of living Amendment Article 11.B.4.1.(a), (i) in the By-Laws from expiring in June 2013 to expiring in June 2018 .
- D. Vote **YES** or **NO** to change the cost of living Amendment 9.C.4.(we are referring to the #4 on page 15) (a),(ii) in the Covenants, Conditions and Restriction from expiring December 31, 2007 to expiring in June 2018.
- E. Election of **TWO (2)** Directors for CLU. The candidates who receive the highest number of votes will fill **TWO (2)** vacant seats for **3-year terms**.

MAY 10, 2012 has been fixed as the record date for the determination of the members entitled to notice of the meeting. Payments of all dues, assessments, utility fees, and fines due must be paid by the record date for voting rights at the **JUNE 3, 2012** Annual Meeting.

Quorum for the Association shall consist of the number of members who are eligible to vote, and who cast their vote, either in person or by absentee ballot.

Quorum for the Utilities shall not be less than Twenty-five percent (25%) of the members in good standing, who shall be present in person or by absentee ballot.

All members are urged to attend the Annual Meeting, however we request that you mail your sealed ballot(s) to the Referee one week BEFORE the Annual Meeting.

Please retain this information for future reference, as it will not be published again.

Note: New owners must be published in the Ashland Times Gazette on **Friday, May 4, 2012** or before, or ballot will go to owner on file.

Important Date: Week of **May 14, 2012** ballots will be mailed. Ballots are due in on **June 1, 2012.**

APPLICATION FOR BOARD OF DIRECTORS

FOR WHICH BOARD OF DIRECTORS ARE YOU APPLYING? ASSOCIATION UTILITIES

NAME RICHARD COOKE UNIT 5 LOT(S) 116

PERMANENT ADDRESS 5116 SANGRIA DR.

1) Education and Training 2 YRS. COLLEGE. ASSOCIATES DEGREE SPECIALIZED TECH.

2) Present Employment RETIRED

3) Relevant Work Experience AIRCRAFT MECHANIC AND MACHINE REPAIRMAN

Please answer the following questions:

1) Are you current in all Association and Utility charges? Yes No

2) Are you in compliance with all Association obligations (No C.C. & R. violations, shoreline protection, etc.) Yes No

3) Have you ever been convicted of a felony? Yes No

4) Are you currently (or in the past) involved with litigation with another Association Member or against the Association? Yes No If yes, please explain briefly: _____

Answer the following questions according to which Board you are applying for (Association/ Utilities).

1) What are the three most important issues facing the Association or Utilities?

① ROAD REPAIR

② TOO MANY ASSOCIATION OWNED LOTS

③ DELINQUENT ACCOUNTS

2) What actions do you feel would address these issues?

① PUT MORE MONEY INTO THE ROAD REPAIR FUND (ACCOUNT)

② SET UP A MARKETING COMMITTEE TO SHOWCASE CINNAMON LAKE AND SELL LOTS

③ BE MORE AGGRESSIVE IN COLLECTIONS

3) What contributions have you made for the betterment of Cinnamon Lake? Do you belong to any committees? WAS ON FISH AND LAKE COMMITTEE.

AM PRESENTLY ON ENVIRONMENTAL COMMITTEE FOR 6 YRS.

4) What qualifications or skills would you bring to the Board of Directors?

I RAN A MAINTENANCE SHOP FOR 15 YRS.

MY WILLINGNESS TO HELP PEOPLE.

COMMON SENSE.

Signature of Applicant: Richard Cooke Date: 3-16-12

NOTE Applications must be submitted by Candidate. Deadline to turn in Application is: FRIDAY, 4-13-12 by 4:00 P.M. at the Cinnamon Lake Office.

APPLICATION FOR BOARD OF DIRECTORS

FOR WHICH BOARD OF DIRECTORS ARE YOU APPLYING? ASSOCIATION X UTILITIES _____

NAME JAMES PRINDLE UNIT 4 LOT(S) 209

PERMANENT ADDRESS 4209 MAJORNA DR

1) Education and Training MCKIM TECH SCHOOL HEATING-A/C-ELECTRICAL-REFRIGERATION
ARON GARFIELD H.S.

2) Present Employment BEDFORD CITY SCHOOLS

3) Relevant Work Experience HVAC TRADESMAN 20+ YEARS, WAREHOUSE MAINTENANCE 9 YEARS

Please answer the following questions:

- 1) Are you current in all Association and Utility charges? Yes X No _____
- 2) Are you in compliance with all Association obligations (No C.C. & R. violations, shoreline protection, etc.) Yes X No _____
- 3) Have you ever been convicted of a felony? Yes _____ No X
- 4) Are you currently (or in the past) involved with litigation with another Association Member or against the Association? Yes _____ No X If yes, please explain briefly: _____

Answer the following questions according to which Board you are applying for (Association/ Utilities).

1) What are the three most important issues facing the Association or Utilities?

- 1) ROAD REPAIR
- 2) BUILDING PERMIT CHARGES
- 3) COMMUNITY

2) What actions do you feel would address these issues?

- 1) ROAD NEEDS REPAIR WOULD TRY TO FIND WAYS TO SPEED-UP REPAIRS
- 2) BUILDING PERMITS HAVE BEEN A ISSUE FOR ME AND OTHER HOME OWNERS, IF PERMITS CONTINUE CANNON LAKE NEED TO HAVE QUALIFIED PEOPLE DONE THE INSPECTIONS
- 3) TRY TO BRING THE COMMUNITY TOGETHER

3) What contributions have you made for the betterment of Cinnamon Lake? Do you belong to any committees? NO COMMITTEES BUILT HOME 3 YEARS AGO

4) What qualifications or skills would you bring to the Board of Directors?

LICENSE HVAC/R TRADESMAN, BOILER OPERATOR, ASBESTOS ABATMENT SPECIALIST
HOLD A. BUILDING OPERATOR CERTIFICATE FROM STATE OF OHIO, 30+ YEARS IN
MAINTENANCE OF BUILDINGS, WAREHOUSES, SCHOOLS AND EQUIPMENT

Signature of Applicant: [Signature] Date: 4-13-12

NOTE Applications must be submitted by Candidate. Deadline to turn in Application is:
FRIDAY, April 13th 2012 by 4:00 P.M. at the Cinnamon Lake Office.

APPLICATION FOR BOARD OF DIRECTORS

FOR WHICH BOARD OF DIRECTORS ARE YOU APPLYING? ASSOCIATION _____ UTILITIES
NAME JOSEPH F. PETRIC UNIT III LOT(S) 172 & 173
PERMANENT ADDRESS 3172 KINATA CT.

- 1) Education and Training BACHELOR CIVIL ENGINEERING, UNIV. OF DAYTON
2) Present Employment RETIRED 2/06, 42 YEARS AS PRACTICING CIVIL ENGINEER
3) Relevant Work Experience DESIGNED HIGHWAYS & BRIDGES FOR VARIOUS STATES, CITIES & COUNTIES. DEPT. HEAD & PROJECT MGR. 25 YEARS

Please answer the following questions:

- 1) Are you current in all Association and Utility charges? Yes No _____
2) Are you in compliance with all Association obligations (No C.C. & R. violations, shoreline protection, etc.)
Yes No _____
3) Have you ever been convicted of a felony? Yes _____ No
4) Are you currently (or in the past) involved with litigation with another Association Member or against the Association? Yes _____ No If yes, please explain briefly: _____

Answer the following questions according to which Board you are applying for (Association/ Utilities).

- 1) What are the three most important issues facing the Association or Utilities?
1. COMPLETE EXPANSION & UPGRADE OF OUR WASTE WATER TREAT. PLANT.

2. CLEAN SEWERS & MAINTAIN PUMP STATIONS.

3. WORK ON REDUCING STORM WATER INFILTRATION INTO SEWER LINES TO REDUCE LOAD ON WWTP.

- 2) What actions do you feel would address these issues?

1. FOLLOW UP ON WORK PERFORMED BY CONTRACTOR.

2. ESTABLISH SCHEDULE & PROCEDURE FOR DOING THE WORK.

3. CONTINUE WITH SEWER LINE INSPECTION & RAISING MANHOLES.

- 3) What contributions have you made for the betterment of Cinnamon Lake? Do you belong to any committees?
• PRESIDENT OF UTILITY BOARD & V.P. OF ASSOCIATION BD.
• WORKED ON COMMITTEE TO BRING RLCWA WATER INTO CINN. LAKE.
• INSTRUMENTAL IN GETTING WWTP PLANS PREPARED & UNDER CONTRACT.

- 4) What qualifications or skills would you bring to the Board of Directors?

I BELIEVE THAT MY MANY YEARS OF EXPERIENCE AS A CIVIL ENGINEER IS A GREAT ASSET IN ADDRESSING MANY OF THE ISSUES HERE AT CINNAMON LAKE.

Signature of Applicant: Joseph F. Petric

Date: 3/19/12

NOTE Applications must be submitted by Candidate. Deadline to turn in Application is:
FRIDAY, 4-13-12 by 4:00 P.M. at the Cinnamon Lake Office.

APPLICATION FOR BOARD OF DIRECTORS

FOR WHICH BOARD OF DIRECTORS ARE YOU APPLYING? ASSOCIATION _____ UTILITIES X
NAME KATHY SNYDER UNIT 1 LOT(S) 143, 144, 145
PERMANENT ADDRESS 1144 LAUREL DRIVE, West Salem, Ohio 44287

- 1) Education and Training Graduate Cloverleaf Sr High
2) Present Employment Buehlers Fresh Foods
3) Relevant Work Experience Present Utility + Assoc board member

Please answer the following questions:

- 1) Are you current in all Association and Utility charges? Yes X No _____
2) Are you in compliance with all Association obligations (No C.C. & R. violations, shoreline protection, etc.)
Yes X No _____
3) Have you ever been convicted of a felony? Yes _____ No X
4) Are you currently (or in the past) involved with litigation with another Association Member or against the Association? Yes _____ No X If yes, please explain briefly: _____

Answer the following questions according to which Board you are applying for (Association/ Utilities).

1) What are the three most important issues facing the Association or Utilities?

- 1- EPA upgrades
2- Construction of WWP
3- Community input - involvement

2) What actions do you feel would address these issues?

The water changing over to Lorain Rural Water was a big accomplishment. The upcoming project at the waste water plant is Cinnamon Lake's next big adventure. I encourage the members of Cinnamon Lake to follow our progress with this by attending C.L. Utility meetings, and encourage that if they have questions or concerns to ask.

3) What contributions have you made for the betterment of Cinnamon Lake? Do you belong to any committees? was founder - Chairman of C.L. Entertainment Committee
Previous + present Association Board member

4) What qualifications or skills would you bring to the Board of Directors?

Experience as Association board member
Recently serving on utility board

Signature of Applicant: Kathy Snyder Date: March 12, 2012

NOTE Applications must be submitted by Candidate. Deadline to turn in Application is:
FRIDAY, 4-13-12 by 4:00 P.M. at the Cinnamon Lake Office.

APPLICATION FOR NOMINATING COMMITTEE

NAME DAVID Bae UNIT 4099 LOT(S) _____

PERMANENT ADDRESS 4099 TEAK PLACES, W. Sharon Oh 44287

Please answer the following questions:

- 1) Are you current in all Association and Utility charges? Yes X No _____
- 2) Are you in compliance with all Association obligations (No C.C. & R. violations, shoreline protection, etc.)
Yes X No _____
- 3) Have you ever been convicted of a felony? Yes _____ No X
- 4) Are you currently (or in the past) involved with litigation with another Association Member or against the Association? Yes _____ No X If yes, please explain briefly: _____

1) What contributions have you made for the betterment of Cinnamon Lake? Do you belong to any committees? _____

2) What qualifications or skills would you bring to the Nominating Committee?

Signature of Applicant: David Bae Date: 1 April 2012

NOTE Applications must be submitted by Candidate. Deadline to turn in Application is:
FRIDAY, 4-13-12 by 4:00 P.M. at the Cinnamon Lake Office.

APPLICATION FOR NOMINATING COMMITTEE

NAME Rachel Habel

UNIT 1

LOT(S) 1158

PERMANENT ADDRESS 1158 Verbena Ct W. Salem

Please answer the following questions:

- 1) Are you current in all Association and Utility charges? Yes No
- 2) Are you in compliance with all Association obligations (No C.C. & R. violations, shoreline protection, etc.)
Yes No
- 3) Have you ever been convicted of a felony? Yes No
- 4) Are you currently (or in the past) involved with litigation with another Association Member or against the Association? Yes No If yes, please explain briefly: _____

1) What contributions have you made for the betterment of Cinnamon Lake? Do you belong to any committees? Nominating Committee, Beautification Committee

2) What qualifications or skills would you bring to the Nominating Committee?
Accounting Background prepares me for the skills needed for this committee.

Signature of Applicant: Rachel Habel

Date: 3/14/12

NOTE Applications must be submitted by Candidate. Deadline to turn in Application is:
FRIDAY, 4-13-12 by 4:00 P.M. at the Cinnamon Lake Office.

APPLICATION FOR NOMINATING COMMITTEE

NAME DOROTHY KOMPIER

UNIT 3

LOT(S) 70-71-72

PERMANENT ADDRESS 3071 CINNAMIN DRIVE

Please answer the following questions:

1) Are you current in all Association and Utility charges? Yes No

2) Are you in compliance with all Association obligations (No C.C. & R. violations, shoreline protection, etc.)
Yes No

3) Have you ever been convicted of a felony? Yes No

4) Are you currently (or in the past) involved with litigation with another Association Member or against the Association? Yes No If yes, please explain briefly: _____

1) What contributions have you made for the betterment of Cinnamon Lake? Do you belong to any committees? HAVE BEEN A MEMBER OF THE NOMINATING COMMITTEE FOR 2 YEARS

2) What qualifications or skills would you bring to the Nominating Committee?

HAVING WORKED AS A NURSE AT MEDINA GENERAL HOSPITAL AND PRIOR TO THAT AS A HEAD TELLER AT NATIONAL CITY BANK THIS HAS HELPED ME TO COMMUNICATE WITH PEOPLE EASILY.

Signature of Applicant: Dorothy A. Kompier Date: March 21, 2012

NOTE Applications must be submitted by Candidate. Deadline to turn in Application is: FRIDAY, 4-13-12 by 4:00 P.M. at the Cinnamon Lake Office.

APPLICATION FOR NOMINATING COMMITTEE

NAME BERNADINE G. MILLER

UNIT 6

LOT(S) 6037

PERMANENT ADDRESS 6037 SEQUOIA PLACE

Please answer the following questions:

- 1) Are you current in all Association and Utility charges? Yes No
- 2) Are you in compliance with all Association obligations (No C.C. & R. violations, shoreline protection, etc.)
Yes No
- 3) Have you ever been convicted of a felony? Yes No
- 4) Are you currently (or in the past) involved with litigation with another Association Member or against the Association? Yes No If yes, please explain briefly: _____

1) What contributions have you made for the betterment of Cinnamon Lake? Do you belong to any committees? Nominating Committee

2) What qualifications or skills would you bring to the Nominating Committee?

INTEGRITY. RESEARCH FOR DESIRABLE CANDIDATES WHO ARE DEDICATED TO THE MAINTENANCE AND PRESERVATION OF CINNAMON LAKE AS A DESIRABLE RESIDENTIAL COMMUNITY.

Signature of Applicant: Bernadine G. Miller Date: 4-2-12

NOTE Applications must be submitted by Candidate. Deadline to turn in Application is:
FRIDAY, 4-13-12 by 4:00 P.M. at the Cinnamon Lake Office.

APPLICATION FOR NOMINATING COMMITTEE

NAME JUDITH F. PETRIC UNIT 111 LOT(S) 172 & 173

PERMANENT ADDRESS 3172 KINATA COURT

Please answer the following questions:

- 1) Are you current in all Association and Utility charges? Yes No
- 2) Are you in compliance with all Association obligations (No C.C. & R. violations, shoreline protection, etc.)
Yes No
- 3) Have you ever been convicted of a felony? Yes No
- 4) Are you currently (or in the past) involved with litigation with another Association Member or against the Association? Yes No If yes, please explain briefly: _____

1) What contributions have you made for the betterment of Cinnamon Lake? Do you belong to any committees?
• HELPS AT OFFICE AS NEEDED.
• PAST EXPERIENCE OF NOMINATING COMMITTEE & ELECTION COMMITTEE.

2) What qualifications or skills would you bring to the Nominating Committee?
• ORGANIZATIONAL SKILLS

Signature of Applicant: Judith F. Petric Date: 4/8/12

NOTE Applications must be submitted by Candidate. Deadline to turn in Application is:
FRIDAY, 4-13-12 by 4:00 P.M. at the Cinnamon Lake Office.

Cinnamon Lake Association Profit & Loss YTD Comparison March 2012

	Mar 12	Jan - Mar 12
Ordinary Income/Expense		
Income		
4200 · DUES	8,862.50	26,662.50
4201 · ASSESSMENT	34,086.75	102,404.38
4203 · ANNUAL ROAD ASSESSMENT	0.00	29,150.00
4205 · GATE PASSES		
4205B · REACTIVATE GATE CARD FEE	270.00	270.00
4205 · GATE PASSES - Other	180.00	310.00
Total 4205 · GATE PASSES	450.00	580.00
4208 · BUILDING PERMITS	125.00	175.00
4210 · Fee Income		
4207 · LATE PAYMENT FEES	1,914.84	7,119.08
Total 4210 · Fee Income	1,914.84	7,119.08
4211 · LABOR, MAINTENANCE	250.00	537.50
4212 · MOWING	0.00	100.00
4213 · GRAVEL SALES	1,215.00	2,547.00
4216 · BOAT DOCK RENTALS	825.00	825.00
4217 · STORAGE INCOME	1,750.00	1,750.00
4218 · Rental Income	60.00	60.00
4220 · LODGE RENTAL	300.00	566.68
4230 · ADVERTISING INCOME	20.00	738.00
4231 · PLAYGROUND FUND	50.00	75.00
4232 · FISH & LAKE INCOME		
4233 · YEARLY BOAT STICKER	480.00	510.00
4232 · FISH & LAKE INCOME - Other	166.97	166.97
Total 4232 · FISH & LAKE INCOME	646.97	676.97
4237 · BOAT REGISTRATIONS	20.00	20.00
4240 · CAMPING FEES	9,225.00	9,225.00
4243 · CONTRACTOR REGISTRATION	0.00	0.00
4252 · SNOW REMOVAL	0.00	50.00
4254 · TRASH		
4253 · 4253 DUMPSTER PER USE	80.00	230.00
4254 · TRASH - Other	0.00	32,460.00
Total 4254 · TRASH	80.00	32,690.00
4270 · ICE INCOME	192.00	441.00
4295 · FINES	0.00	150.00
4800 · UTILITY TRANSFER	0.00	0.00
4999 · Uncategorized Income	198.76	1,344.56
Total Income	60,271.82	217,887.67
Expense		
5000 · ADMINISTRATIVE EXPENSES	-203.00	324.00
5002 · WATER FOR MOST LOCATIONS	45.47	136.95
5005 · ADVERTISING EXPENSE	75.15	75.15
5015 · CAMPGROUND EXPENSES		
5020 · CAMPGROUND ELECTRIC	0.00	85.31
Total 5015 · CAMPGROUND EXPENSES	0.00	85.31
5030 · ELECTRIC ASSOCIATION		
5031 · DOCK ELECTRIC	29.92	89.76
5032 · OFFICE ELECTRIC	0.00	712.36
5033 · GUARD HOUSE ELECTRIC	189.20	595.09
5034 · BACK GATE ELECTRIC	94.10	287.44
6513 · BALLFIELD ELECTRIC	0.00	149.15
Total 5030 · ELECTRIC ASSOCIATION	313.22	1,833.80
5040 · FUEL		
5041 · GASOLINE		
5041-A · DIESEL	633.91	1,051.19
5041 · GASOLINE - Other	712.05	2,545.17
Total 5041 · GASOLINE	1,345.96	3,596.36

Cinnamon Lake Association Profit & Loss YTD Comparison March 2012

	Mar 12	Jan - Mar 12
5042 · FUEL OIL	468.71	1,195.50
5043 · PROPANE	525.11	1,929.93
5040 · FUEL - Other	-2,672.23	-2,672.23
Total 5040 · FUEL	-332.45	4,049.56
5045 · IMPROVEMENTS/REPAIRS	0.00	960.75
5050 · LAKE/FISH COMMITTEE	0.00	2,200.00
5060 · LODGE EXPENSES		
5061 · ELECTRIC, LODGE	61.69	1,020.90
5064 · LODGE WATER	22.60	67.80
5060 · LODGE EXPENSES - Other	285.10	553.62
Total 5060 · LODGE EXPENSES	369.39	1,642.32
5074 · EMPLOYEE UNIFORMS/BOOTS	15.98	15.98
5075 · MAINTENANCE SUPPLIES	310.19	1,137.64
5076 · MAINTENANCE EQUIPMENT	0.00	710.40
5077 · MAINTENANCE TOOLS	28.79	28.79
5080 · Security monitoring	37.36	112.08
5090 · OFFICE EQUIPMENT LEASE	315.90	979.73
5100 · ROAD MAINTENANCE		
5100-A · REPLACE/REPAIR CULVERTS	238.00	414.14
5100 · ROAD MAINTENANCE - Other	638.02	3,382.44
Total 5100 · ROAD MAINTENANCE	876.02	3,796.58
5105 · SAFETY		
5106 · MATS	169.56	673.65
5105 · SAFETY - Other	299.40	319.56
Total 5105 · SAFETY	468.96	993.21
5200 · TRASH DISPOSAL		
5201 · TRASH MISC	85.26	232.16
5200 · TRASH DISPOSAL - Other	4,174.05	11,684.68
Total 5200 · TRASH DISPOSAL	4,259.31	11,916.84
5505 · GRAVEL PURCHASES	2,489.10	4,853.05
5510 · ICE PURCHASES	122.50	255.50
6110 · MAINT. VEHICLES EXPENSE	35.93	653.23
6120 · Bank Service Charges	536.96	1,303.29
6150 · Depreciation Expense	2,510.74	7,532.22
6170 · Equipment Rental	889.31	2,053.91
6180 · INSURANCE		
6190 · GROUP HEALTH & DENTAL	847.02	2,236.44
6530 · Liability Insurance	1,086.00	17,658.50
Total 6180 · INSURANCE	1,933.02	19,894.94
6230 · Licenses and Permits	95.00	398.05
6240 · MISCELLANEOUS	11.12	239.86
6250 · Postage and Delivery	130.27	1,130.27
6270 · Professional Fees		
6280 · Legal Fees	918.75	3,759.68
6565 · Accounting	200.00	577.90
Total 6270 · Professional Fees	1,118.75	4,337.58
6300 · Repairs		
6310 · Building Repairs	0.00	135.57
6320 · Computer Repairs	0.00	168.75
6330 · Equipment Repairs	2,228.39	2,228.39
Total 6300 · Repairs	2,228.39	2,532.71
6309 · OFFICE MAINTENANCE	43.38	373.76
6340 · TELEPHONE		
6340-1 · CELLULAR PHONES	113.50	554.87
6340-2 · INTERNET ACCESS	85.35	256.05
6340 · TELEPHONE - Other	509.40	1,579.85
Total 6340 · TELEPHONE	708.25	2,390.77

Cinnamon Lake Association
Profit & Loss YTD Comparison
 March 2012

	Mar 12	Jan - Mar 12
6560 · PAYROLL EXPENSES		
6561 · OFFICE GROSS WAGES	2,074.27	6,109.57
6562 · MAINTENANCE, SALARIES & WAGES	7,501.87	21,879.64
6563 · SECURITY, SALARIES & WAGES	5,378.40	14,691.15
6567 · IRA MATCH, OFFICE	60.00	180.00
6568 · IRA MATCH, MAINTENANCE	60.00	180.00
6570 · PAYROLL TAXES, OFFICE	325.09	1,031.80
6571 · PAYROLL TAXES, MAINTENANCE	966.83	2,799.22
6572 · PAYROLL TAXES, SECURITY	411.45	1,226.77
6574 · Payroll Taxes-FUTA/SUTA	1,072.31	4,028.95
7575-A · PAYROLL PROSSECCING	80.00	280.00
Total 6560 · PAYROLL EXPENSES	17,930.22	52,407.10
6579 · Worker's Compensation Insurance	567.21	1,662.47
6580 · Supplies		
6581 · COMPUTER	9.37	902.13
6600 · Office	321.74	581.95
Total 6580 · Supplies	331.11	1,484.08
6610 · Taxes		
6640 · REAL ESTATE TAXES	0.00	4,779.33
6610 · Taxes - Other	150.00	150.00
Total 6610 · Taxes	150.00	4,929.33
Total Expense	38,411.55	139,431.21
Net Ordinary Income	21,860.27	78,456.46
Other Income/Expense		
Other Income		
7010 · Interest Income	17.46	49.21
Total Other Income	17.46	49.21
Other Expense		
8011 · BAD DEBTS EXPENSE	0.00	0.00
Total Other Expense	0.00	0.00
Net Other Income	17.46	49.21
Net Income	21,877.73	78,505.67

Cinnamon Lake Association
Balance Sheet
 As of March 31, 2012

	Mar 31, 12
ASSETS	
Current Assets	
Checking/Savings	
1080 · PETTY CASH	200.00
1300 · CLA OPERATING ACT. (HUNTINGTON)	231,242.81
1310 · HUNTINGTON RESERVE MONEY MARKET	67,081.97
1320 · ROAD RENEWAL FUND (HUNTINGTON)	33,934.32
Total Checking/Savings	332,459.10
Accounts Receivable	
1100 · Accounts Receivable	414,863.82
1101 · ALLOWANCE FOR BAD DEBTS	-278,575.98
Total Accounts Receivable	136,287.84
Other Current Assets	
1499 · Undeposited Funds	448.56
Total Other Current Assets	448.56
Total Current Assets	469,195.50
Fixed Assets	
1619 ACCUM DEP POOL	-37,248.24
1500 · BUILDING	635,151.88
1501 · Pool	132,065.03
1505 · LAND	1,080,496.00
1510 · LAND-LAKE IMPROVEMENT	375,824.47
1515 · MACHINERY & EQUIPMENT	222,360.82
1517 · SERVICE VEHICLES	137,922.94
1518 · ROAD IMPROVEMENTS	295,646.42
1520 · OFFICE EQUIP.	30,064.51
1600 · ACCUM. DEPRECIATION, BUILDING	-477,532.79
1615 · ACCUM. DEPRECIATION MACH&EQUIP	-123,116.10
1617 · ACCUM. DEP. SERVICE VEHICLES	-133,912.39
1618 · DEP. ROAD IMPROVEMENTS	-257,515.49
1620 · ACCUM. DEP. OFFICE EQUIPMENT	-28,069.68
Total Fixed Assets	1,852,137.38
Other Assets	
1700 · INVESTMENT-CINNAMON LAKE UTILIT	714,964.41
Total Other Assets	714,964.41
TOTAL ASSETS	3,036,297.29
LIABILITIES & EQUITY	
Liabilities	
Current Liabilities	
Accounts Payable	
2000 · Accounts Payable	2,331.97
Total Accounts Payable	2,331.97
Other Current Liabilities	
2005 · ACCRUED REAL ESTATE TAXES	4,779.33
2100 · PAYROLL LIABILITIES	
2101 · ACCRUED W/C	175.85
2103 · PAYROLL TAXES PAYABLE	2,512.18
2295 · ACCRUED WAGES	5,157.52
6560-A · STATE OF OHIO W/H	505.47
6560-B · ASHLAND CITY W/H	114.24
6574-A · ACCRUAL FUTA/SUTA	4,308.06
2100 · PAYROLL LIABILITIES - Other	-1,304.68
Total 2100 · PAYROLL LIABILITIES	11,468.64

4:21 PM
 04/05/12
 Accrual Basis

**Cinnamon Lake Association
 Balance Sheet
 As of March 31, 2012**

	<u>Mar 31, 12</u>
2200 · Sales Tax Payable	1,011.37
2500 · Deferred Income	182,022.73
Total Other Current Liabilities	<u>199,282.07</u>
Total Current Liabilities	<u>201,814.04</u>
Total Liabilities	201,814.04
Equity	
3000 · COMMON STOCK	500.00
3040 · MEMBERSHIP EQUITY	
3043 · PLAYGROUND COMMITTEE FUND	1,100.00
3044 · BALLFIELD COMMITTEE FUND	1,982.02
3045 · GARDENING & LANDSCAPING COM.	1,092.93
3046 · FISH/LAKE COMMITTEE FUND	4,260.01
3047 · Pool Assessment Fund	26,967.09
3048 · Capital Improvement Fund	12,892.19
3040 · MEMBERSHIP EQUITY - Other	3,275,184.62
Total 3040 · MEMBERSHIP EQUITY	<u>3,323,478.86</u>
3041 · INVESTMENT AT EQUITY	-1,173,207.57
32000 · Retained Earnings	605,406.29
Net Income	78,505.67
Total Equity	<u>2,834,683.25</u>
TOTAL LIABILITIES & EQUITY	<u><u>3,036,297.29</u></u>

4:21 PM
 04/05/12

**Cinnamon Lake Association
 Statement of Cash Flows
 March 2012**

	<u>Mar 12</u>
OPERATING ACTIVITIES	
Net Income	21,877.73
Adjustments to reconcile Net Income to net cash provided by operations:	
1100 · Accounts Receivable	32,114.57
1101 · ALLOWANCE FOR BAD DEBTS	-635.59
2000 · Accounts Payable	701.87
2100 · PAYROLL LIABILITIES:2101 · ACCRUED W/C	567.21
2100 · PAYROLL LIABILITIES:2104 · IRA PAYABLE	-120.00
2100 · PAYROLL LIABILITIES:6560-A · STATE OF OHIO W/H	-22.81
2100 · PAYROLL LIABILITIES:6560-B · ASHLAND CITY W/H	37.13
2100 · PAYROLL LIABILITIES:6574-A · ACCRUAL FUTA/SUTA	1,072.31
2200 · Sales Tax Payable	795.32
2500 · Deferred Income	-42,949.25
Net cash provided by Operating Activities	<u>13,438.49</u>
INVESTING ACTIVITIES	
1600 · ACCUM. DEPRECIATION, BUILDING	1,305.21
1615 · ACCUM. DEPRECIATION MACH&EQUIP	545.32
1617 · ACCUM. DEP. SERVICE VEHICLES	267.38
1618 · DEP. ROAD IMPROVEMENTS	353.25
1620 · ACCUM. DEP. OFFICE EQUIPMENT	39.58
Net cash provided by Investing Activities	<u>2,510.74</u>
Net cash Increase for period	15,949.23
Cash at beginning of period	316,958.43
Cash at end of period	<u><u>332,907.66</u></u>

Cinnamon Lake Utilities Association Inc

Profit & Loss YTD Comparison

March 2012

	Mar 12	Jan - Mar 12
Ordinary Income/Expense		
Income		
4010 · SEWER PROCESS CHARGE	-91.85	51,053.16
4015 · SEWER TRANSIT CHARGE	0.00	25,686.08
4040 · MISC.	738.22	1,284.40
4045 · UTILITY FINANCE CHARGE	2,386.62	7,455.20
4060 · WASTE WATER LOAN SURCHARGE	0.00	36,772.52
4210 · Fees	0.00	0.00
Total Income	3,032.99	122,251.36
Expense		
6571 · PAYROLL PROCESSING	80.00	320.00
6900 · WATER REPLACEMENT PARTS (RLW)	0.00	-345.30
6010 · TESTING	12.34	12.34
6005 · OFFICE Expenses	315.90	979.72
6008 · PROPANE	0.00	2,258.55
6110 · Automobile Expense	0.00	760.15
6120 · Bank Service Charges	-46.87	357.83
6150 · Depreciation Expense	6,586.19	19,758.57
6180 · INSURANCE		
6185 · Liability Insurance	1,086.00	17,658.50
6190 · GROUP HEALTH & DENTAL	0.00	-650.49
Total 6180 · INSURANCE	1,086.00	17,008.01
6201 · BAD DEBT EXPENSE	0.00	0.00
6203 · COMPUTER Expense	0.00	982.54
6205 · Postage	130.27	1,130.27
6213 · GAS/OIL	2,672.23	2,672.23
6215 · TRAINING & EDUCATION	180.00	338.83
6270 · PROFESSIONAL FEES		
6271 · CONSULTING	1,896.25	5,234.15
6280 · Legal Fees	0.00	2,510.57
Total 6270 · PROFESSIONAL FEES	1,896.25	7,744.72
6290 · WWT		
6291 · Maintenance	1,868.22	4,775.94
6292 · Utilities	7.90	1,533.72
Total 6290 · WWT	1,876.12	6,309.66
6295 · WWTP		
6299 · SLUDGE REMOVAL	0.00	2,730.00
6296 · Maintenance	14.29	864.32
6298 · Utilities	23.73	4,177.20
Total 6295 · WWTP	38.02	7,771.52
6300 · REPAIRS & MAINTENANCE		
6330 · Equipment Repairs	0.00	278.83
Total 6300 · REPAIRS & MAINTENANCE	0.00	278.83
6301 · WTP		
6305 · Utilities	0.00	0.00
Total 6301 · WTP	0.00	0.00
6340 · TELEPHONE		
6341 · CELLULAR PHONES	-54.54	172.98
6342 · INTERNET ACCESS	53.32	159.96
6340 · TELEPHONE - Other	57.67	174.79
Total 6340 · TELEPHONE	56.45	507.73
6550 · Office Supplies	321.74	463.20
6560-1 · PAYROLL		
6565 · UTILITY GROSS WAGES	1,902.70	5,442.72
6566 · PAYROLL TAX EXPENSE	145.55	414.89
6568 · FUTA/SUTA Taxes	163.64	466.42
6560-1 · PAYROLL - Other	7,258.57	20,214.92
Total 6560-1 · PAYROLL	9,470.46	26,538.95

2:54 PM
 04/05/12
 Accrual Basis

Cinnamon Lake Utilities Association Inc
Profit & Loss YTD Comparison
 March 2012

	<u>Mar 12</u>	<u>Jan - Mar 12</u>
6580 · Worker's Compensation Insurance	79.70	219.28
6600 · UTILITY EXPENCES		
6415 · UNIFORMS	0.00	152.27
6602 · SAFETY	13.00	13.00
6603 · TRASH DISPOSAL	-14.33	98.97
Total 6600 · UTILITY EXPENCES	-1.33	264.24
6820 · Taxes		
6850 · REAL ESTATE	0.00	1,984.91
6860 · State	150.00	150.00
Total 6820 · Taxes	150.00	2,134.91
6826 · UTILITY SUPPLIES	0.00	21.17
6999 · Uncategorized Expenses	2,250.78	3,850.23
Total Expense	27,154.25	102,338.18
Net Ordinary Income	-24,121.26	19,913.18
Other Income/Expense		
Other Income		
7010 · Interest Income	23.69	56.59
7030 · Other Income	0.00	1.00
Total Other Income	23.69	57.59
Net Other Income	23.69	57.59
Net Income	-24,097.57	19,970.77

2:55 PM
 04/05/12

Cinnamon Lake Utilities Association Inc
Statement of Cash Flows
 March 2012

	<u>Mar 12</u>
OPERATING ACTIVITIES	
Net Income	-24,097.57
Adjustments to reconcile Net Income to net cash provided by operations:	
1200 · Accounts Receivable	2,864.39
1205 · ALLOWANCE FOR BAD DEBT	-141.54
2000 · Accounts Payable	-1,646.38
6566-A · ACCRUAL FICA/MED	285.04
2100 · PAYROLL LIABILITIES	-285.04
2100 · PAYROLL LIABILITIES:6565-C · ACCRUAL SCH...	8.00
2100 · PAYROLL LIABILITIES:6568-A · ACCRUAL FUT...	163.64
2100 · PAYROLL LIABILITIES:6565-A · ACCRUAL OHI...	5.80
2100 · PAYROLL LIABILITIES:2101 · WORKERS COMP...	79.70
Net cash provided by Operating Activities	-22,763.96
INVESTING ACTIVITIES	
1550 · ACCUM. DEPRECIATION-BULDING	3,953.75
1551 · ACCUM. DEPRECIATION EQUIPMENT	2,605.88
1555 · ACCUM. DEP. OFFICE EQUIPMENT	26.56
Net cash provided by Investing Activities	6,586.19
Net cash increase for period	-16,177.77
Cash at beginning of period	142,789.94
Cash at end of period	126,612.17

Cinnamon Lake Utilities Association Inc
Balance Sheet
 As of March 31, 2012

	Mar 31, 12
ASSETS	
Current Assets	
Checking/Savings	
1305 · WWTP LOAN SURCHARGE	29,723.64
1310 · RESERVE FUND (HUNTINGTON)	54,001.86
1300 · CLU OPERATING ACT. (HUNTINGTON)	42,566.67
1000 · CHECKING ACCOUNT	120.00
1005 · PETTY CASH	300.00
Total Checking/Savings	126,712.17
Accounts Receivable	
1200 · Accounts Receivable	215,211.92
1205 · ALLOWANCE FOR BAD DEBT	-161,054.97
Total Accounts Receivable	54,156.95
Other Current Assets	
1499 · Undeposited Funds	-100.00
Total Other Current Assets	-100.00
Total Current Assets	180,769.12
Fixed Assets	
1500 · BUILDINGS	1,158,434.71
1501 · OFFICE EQUIPMENT-UTILITY	8,517.82
1502 · MACHINERY & EQUIPMENT	453,420.86
1505 · LAND	11,208.50
1550 · ACCUM. DEPRECIATION-BULDING	-929,515.25
1551 · ACCUM. DEPRECIATION EQUIPMENT	-321,061.13
1555 · ACCUM. DEP. OFFICE EQUIPMENT	-8,597.51
Total Fixed Assets	372,408.00
TOTAL ASSETS	553,177.12
LIABILITIES & EQUITY	
Liabilities	
Current Liabilities	
Accounts Payable	
2000 · Accounts Payable	-1,416.35
Total Accounts Payable	-1,416.35
Other Current Liabilities	
6566-A · ACCRUAL FICA/MED	925.32
2005 · ACCRUED REAL ESTATE TAXES	4,050.02
2100 · PAYROLL LIABILITIES	
6565-C · ACCRUAL SCHOOL DISTRICT	143.67
6568-A · ACCRUAL FUTA/SUTA	395.37
6565-B · ACCRUAL ASHLAND W/H	-107.80
6565-A · ACCRUAL OHIO W/H	13.62
2101 · WORKERS COMPENSATION ACCRUAL	219.27
2100 · PAYROLL LIABILITIES - Other	-925.32
Total 2100 · PAYROLL LIABILITIES	-281.19
Total Other Current Liabilities	4,714.15
Total Current Liabilities	3,297.80
Total Liabilities	3,297.80
Equity	
1110 · Retained Earnings	248,778.11
3001 · Common Stock	500.00
3025 · ADDITIONAL PAID-IN CAPITAL	280,630.44
Net Income	19,970.77
Total Equity	549,879.32
TOTAL LIABILITIES & EQUITY	553,177.12